

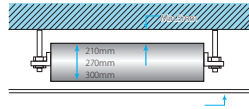
MEDIUM STATIC PRESSURE DUCT

CNT2-2-XMi D17÷D140



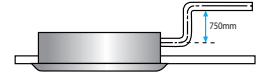
COMPACT DESIGN

Models 22 to 71 are just 210 mm high whilst models 80 to 112 are 270 mm high and model 140 is 300 mm high, all easily positioned in the false ceiling.



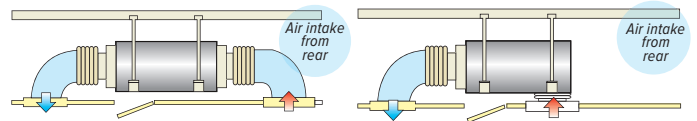
HIGH-LIFT DRAIN PUMP

A drain pump with a 750 mm pump head is fitted as standard, simplifying installation of the drain piping.



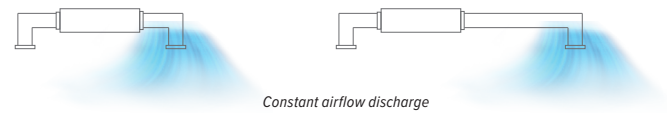
FLEXIBILITY

To provide the flexibility to adapt to differing installation situations, the air inlet may be positioned either on the underside or the rear of the unit.



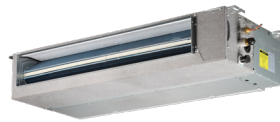
STATIC PRESSURE 10 STEPS CONTROL

Depending on the installation environment, units can be precisely set among 10 different steps of static pressure/ airflow rate combinations, providing comfortable environment suitable for any application.



technical data

CNT2-2-XMi D17÷D140



MEDIUM STATIC PRESSURE DUCT

Size	CNT2-2-XMi	D17	D22	D28	D36	D45	D56	D71	D80	D90	D112	D140	
Cooling ⁽¹⁾	Capacity	kW	1,7	2,2	2,8	3,6	4,5	5,6	7,1	8,0	9,0	11,2	14
	Power input	W	40	40	40	45	92	92	98	110	120	200	250
Heating ⁽²⁾	Capacity	kW	2,2	2,6	3,2	4,0	5,0	6,3	8,0	9,0	10	12,5	15,5
	Power input	W	40	40	40	45	92	92	98	110	120	200	250
Pipe connections	Liquid pipe	mm	Ø 6,35	Ø 6,35	Ø 6,35	Ø 6,35	Ø 6,35	Ø 9,53	Ø 9,53	Ø 9,53	Ø 9,53	Ø 9,53	Ø 9,53
	Gas pipe	mm	Ø 12,7	Ø 12,7	Ø 12,7	Ø 12,7	Ø 12,7	Ø 15,9	Ø 15,9	Ø 15,9	Ø 15,9	Ø 15,9	Ø 15,9
	Drain pipe	mm	OD Ø 25	OD Ø 25	OD Ø 25	OD Ø 25	OD Ø 25	OD Ø 25	OD Ø 25	OD Ø 25	OD Ø 25	OD Ø 25	OD Ø 25
Dimensions (Width x Height x Depth) ⁽⁵⁾	mm	780x210 x500	780x210 x500	780x210 x500	780x210 x500	1000x210 x500	1000x210 x500	1220x210 x500	1230x270 x775	1230x270 x775	1230x270 x775	1290x300 x865	
Weight	kg	18	18	18	18	21,5	21,5	27,5	36,5	37	37	46,5	
Air flow rate ⁽³⁾		m ³ /h	490/480 440/400	520/480 440/400	520/480 440/400	580/540 500/460	800/740 680/620	830/760 720/680	1000/960 900/840	1260/1180 1100/1020	1260/1180 1100/1020	1500/1430 1360/1290	1960/1860 1760/1660
			360/330 300	360/330 300	360/330 300	430/400 370	540/480 400	640/600 560	780/720 680	940/860 780	940/860 780	1210/1140 1080	1560/1460 1360
External static pressure	Pa	10 (0~50) 32/31/29	10 (0~70) 32/31/29	10 (0~70) 32/31/29	10 (0~70) 33/32/31	10 (0~70) 36/34/32	10 (0~70) 36/34/33	10 (0~70) 37/35/33	20 (10~100) 37/35/34	20 (10~100) 37/35/34	20 (10~100) 39/38/38	40 (30~150) 41/39/38	
Sound pressure level ^{(3) (4)}	dB(A)	28/26 25/23	28/26 25/23	28/26 25/23	30/28 27/25	31/29 27/25	32/30 29/28	32/30 29/28	33/31 29/28	33/31 29/28	33/31 29/28	37/35 34/33	37/36 35/33
Sound power level ^{(3) (4)}	dB(A)	50/49/47 46/44	50/49/47 46/44	50/49/47 46/44	51/50/49 48/46	54/52/50 49/47	54/52/51 50/48	55/53/51 51/49	55/53/52 51/49	55/53/52 51/49	57/56/56 55/53	59/57/56 55/54	
Power supply	V/Ph/Hz	220-240/1~/50											

Data measured at standard external static pressure.

- (1) Indoor temperature 27°C DB/19°C WB; Outdoor temperature 35°C DB/24°C WB. Piping length: Interconnecting piping length is 7,5 m, level difference is zero.
- (2) Indoor temperature 20°C DB/15°C WB; Outdoor temperature 7°C DB/6°C WB. Piping length: Interconnecting piping length is 7,5 m, level difference is zero.

(3) Data refer to the 7 fan speeds, in descending order.

(4) Sound values are measured in a semi-anechoic room, at a position 1,4 m below the unit.

(5) Unit body dimensions given are the largest external dimensions of the unit, including hanger attachments

accessories

- RM12D Wireless remote controller
- WDC-86E/KD Compact wired controller
- WDC-120G/WK Wired controller

Data contained in this document are not binding and may be changed by the Manufacturer without notice